

CITY OF OKLAHOMA CITY
Public Transportation
AND parking PROPOSED BUDGET 09-10





reliability

is the **ability** of a person or system to PERFORM and *MAINTAIN ITS FUNCTIONS* in ***routine*** and **unexpected** circumstances.



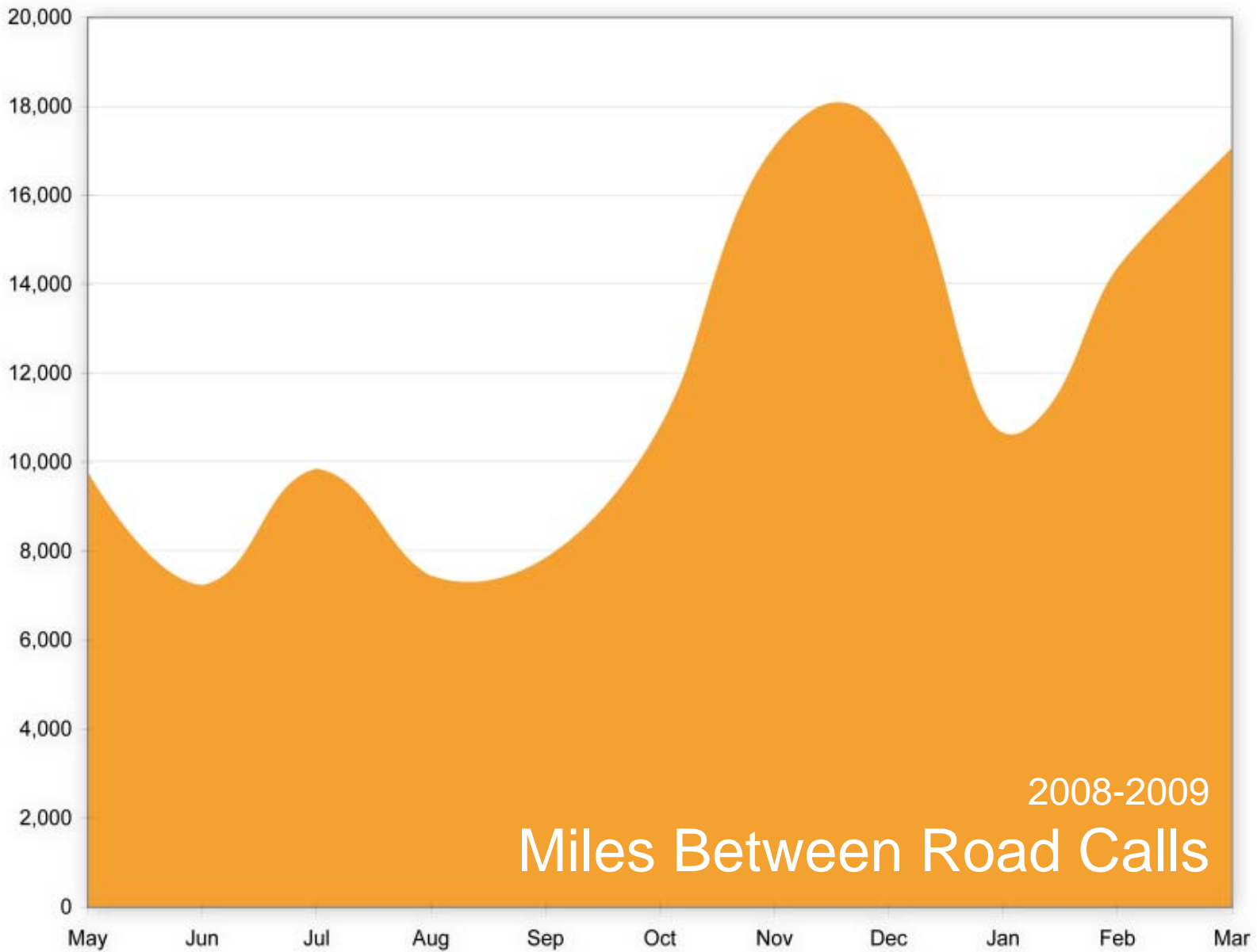
Engine Replacement

thank you



15 New Buses





2008-2009
Miles Between Road Calls

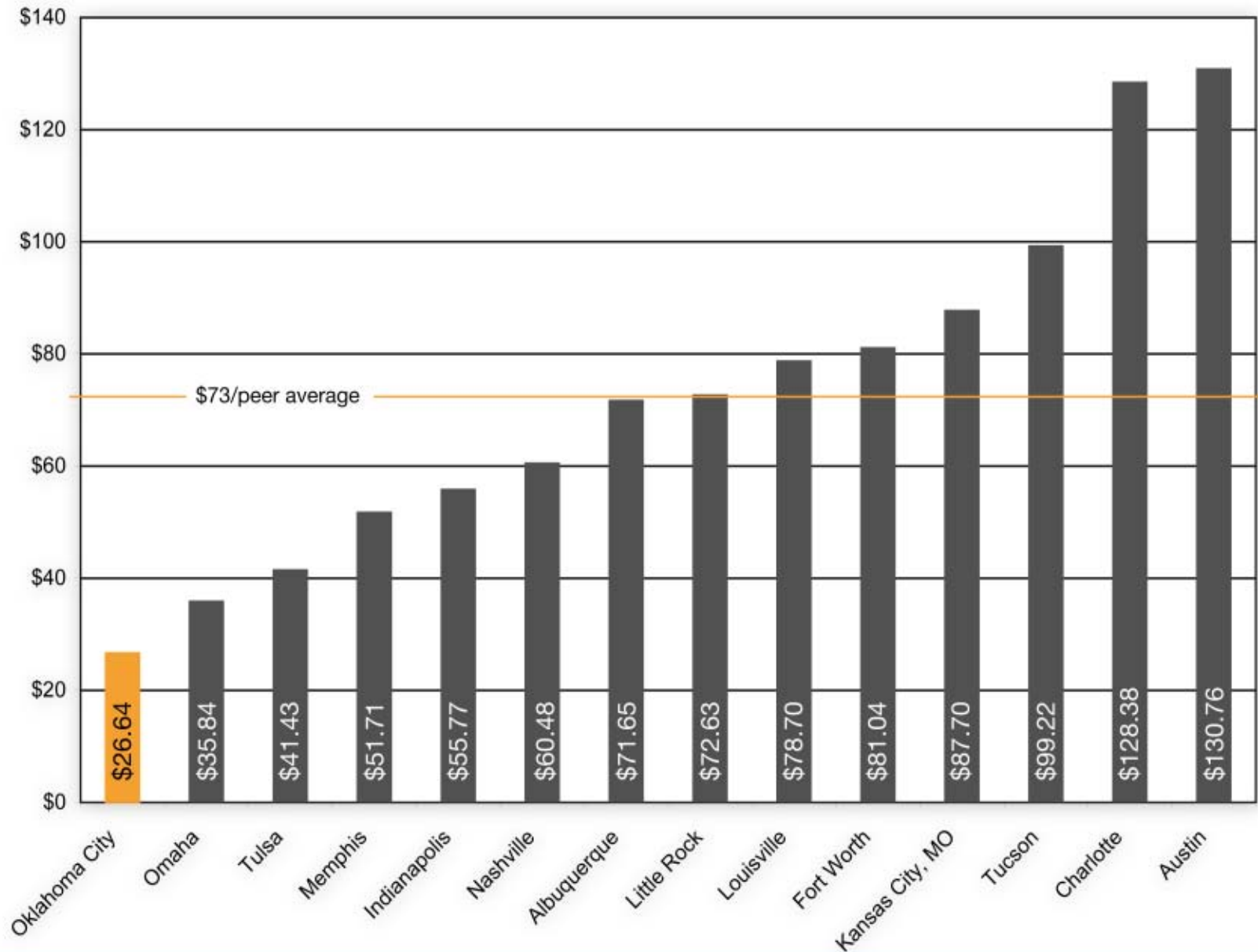


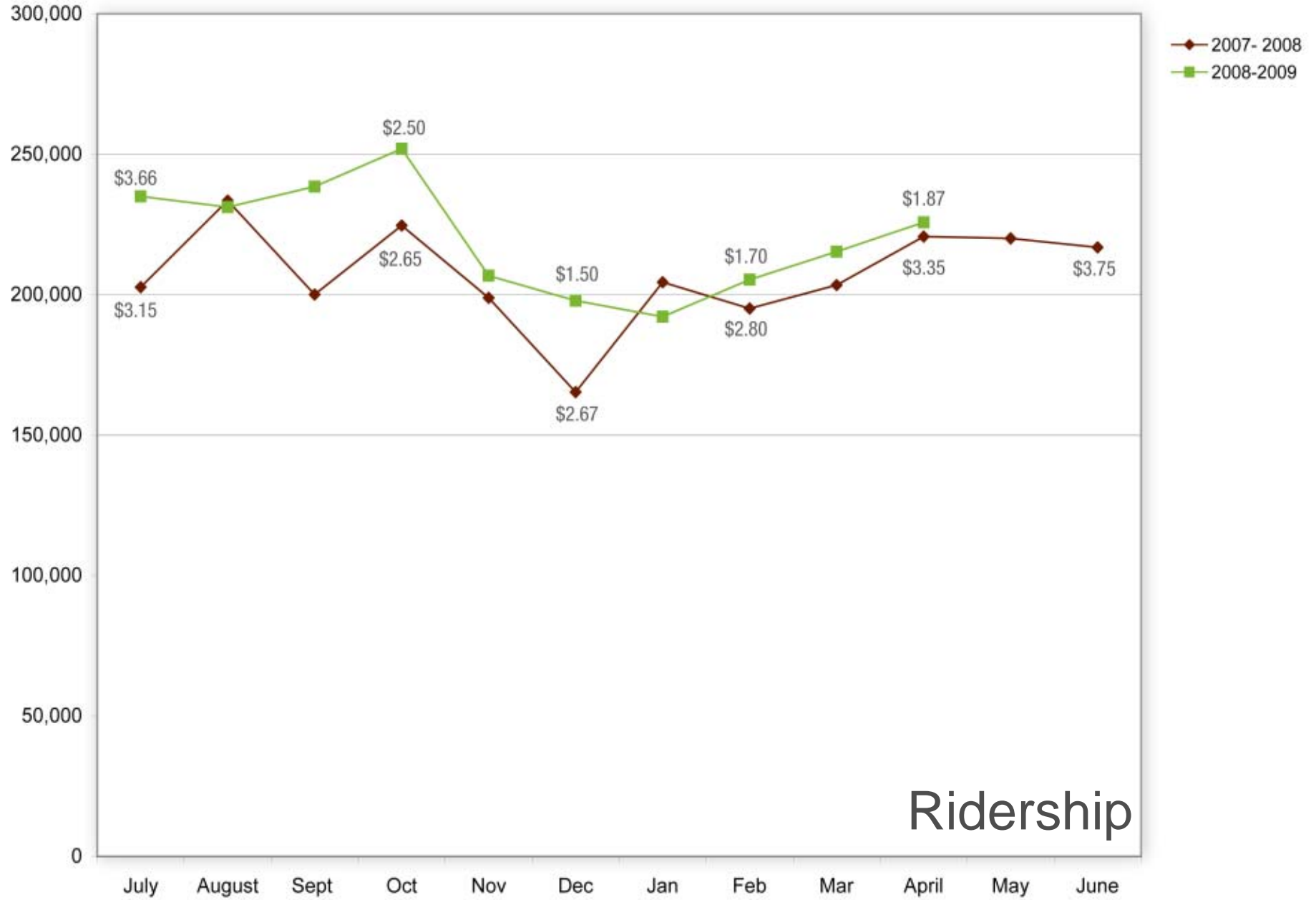
working **smart**

Doing the **most** with

LIMITED resources

Peer Agency Operating Funding Per Capita





Ridership



Devon Discovery

Book Now!



safe **service**

Provide a **safe** and
SECURE environment



Safer Bus Stops



customer **satisfaction**

Understanding expectations

Identifying new customer wishes

Determining what areas need
investment



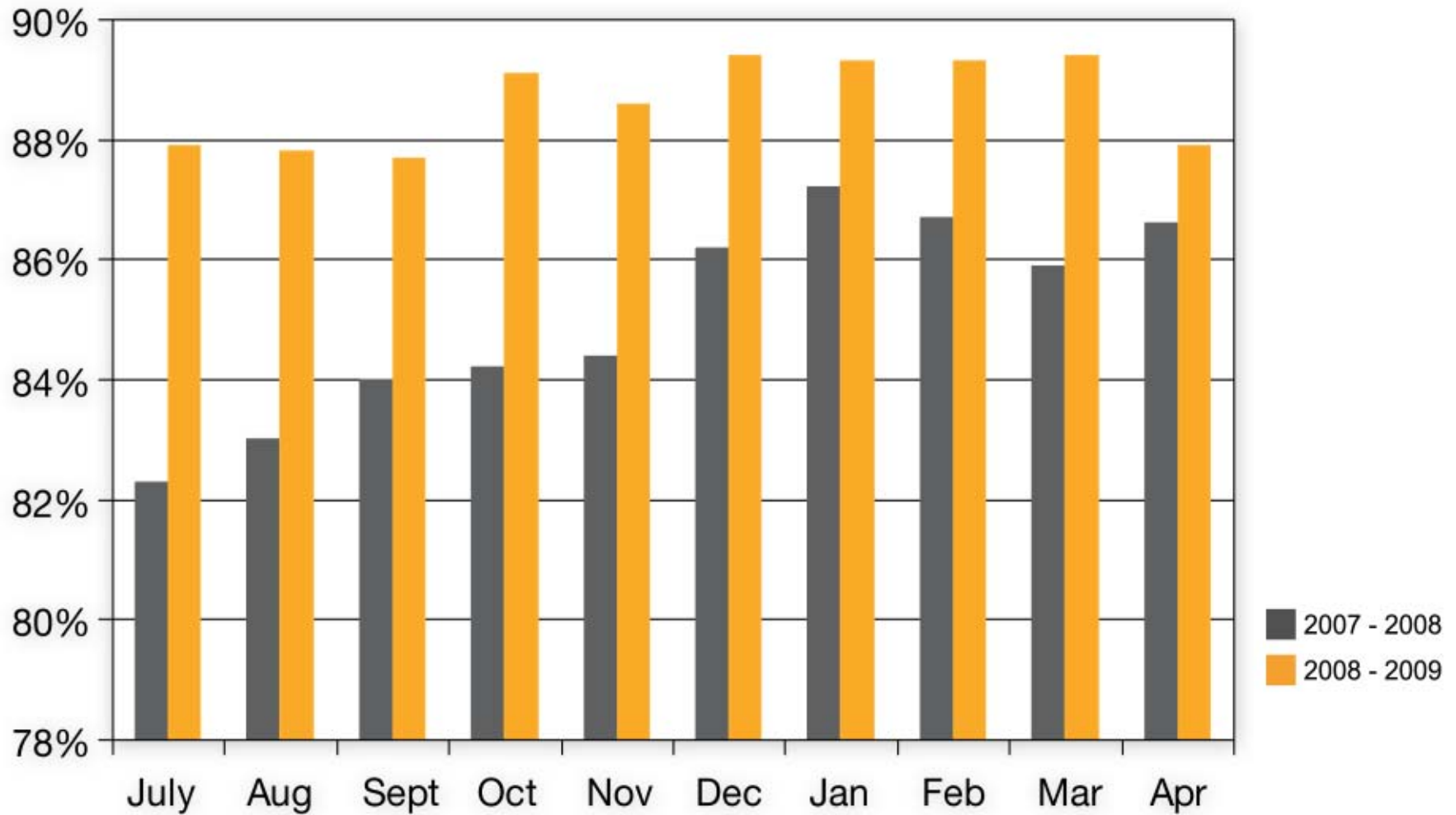
Easier Access



METRO Transit
Central Oklahoma Transportation & Parking Authority

How To Ride The Bus

Parking Occupancy



\$31,783,973

Public Transportation
\$21,712,940



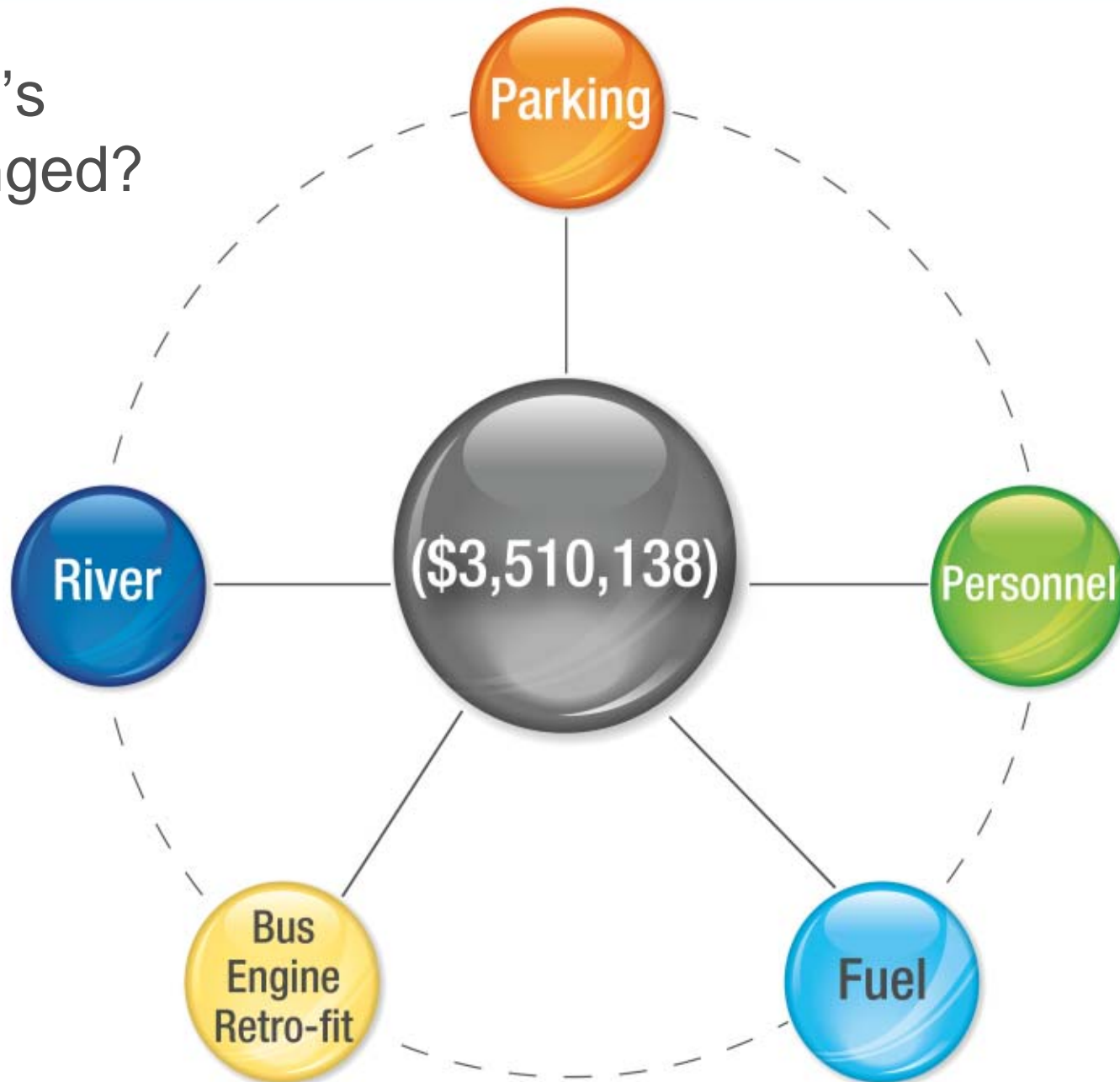
River
\$1,244,003



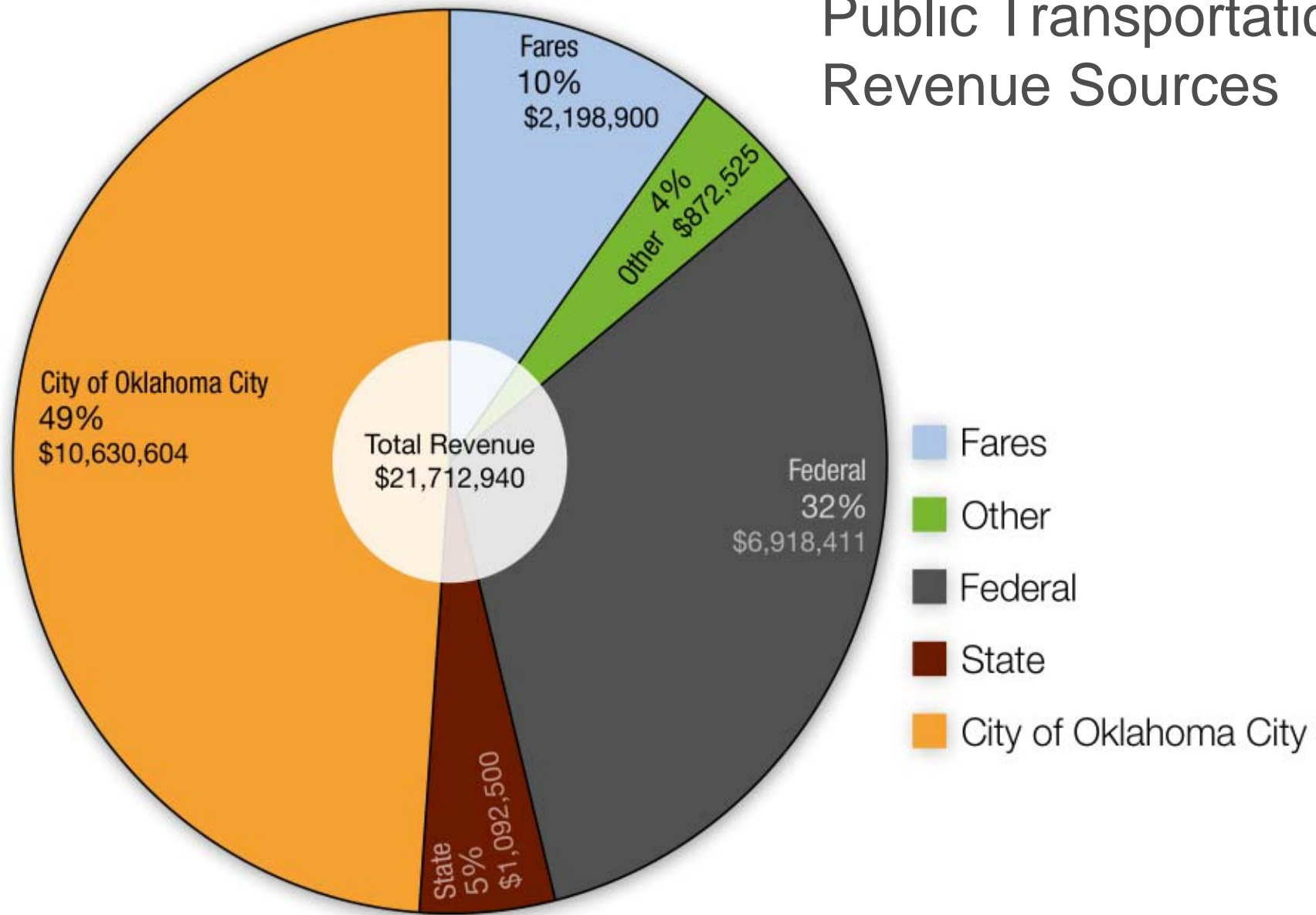
Parking
\$8,827,030



What's
Changed?



Public Transportation Revenue Sources



A green rectangular sign with a white border is mounted on a metal pole. The sign features the word "Future" in a large, white, sans-serif font, with a white arrow pointing to the right below it. To the right of the sign is a traffic light assembly on a metal pole. The traffic light has three lenses: the top one is red, the middle one is yellow, and the bottom one is green and illuminated. The background is a clear blue sky.

Future

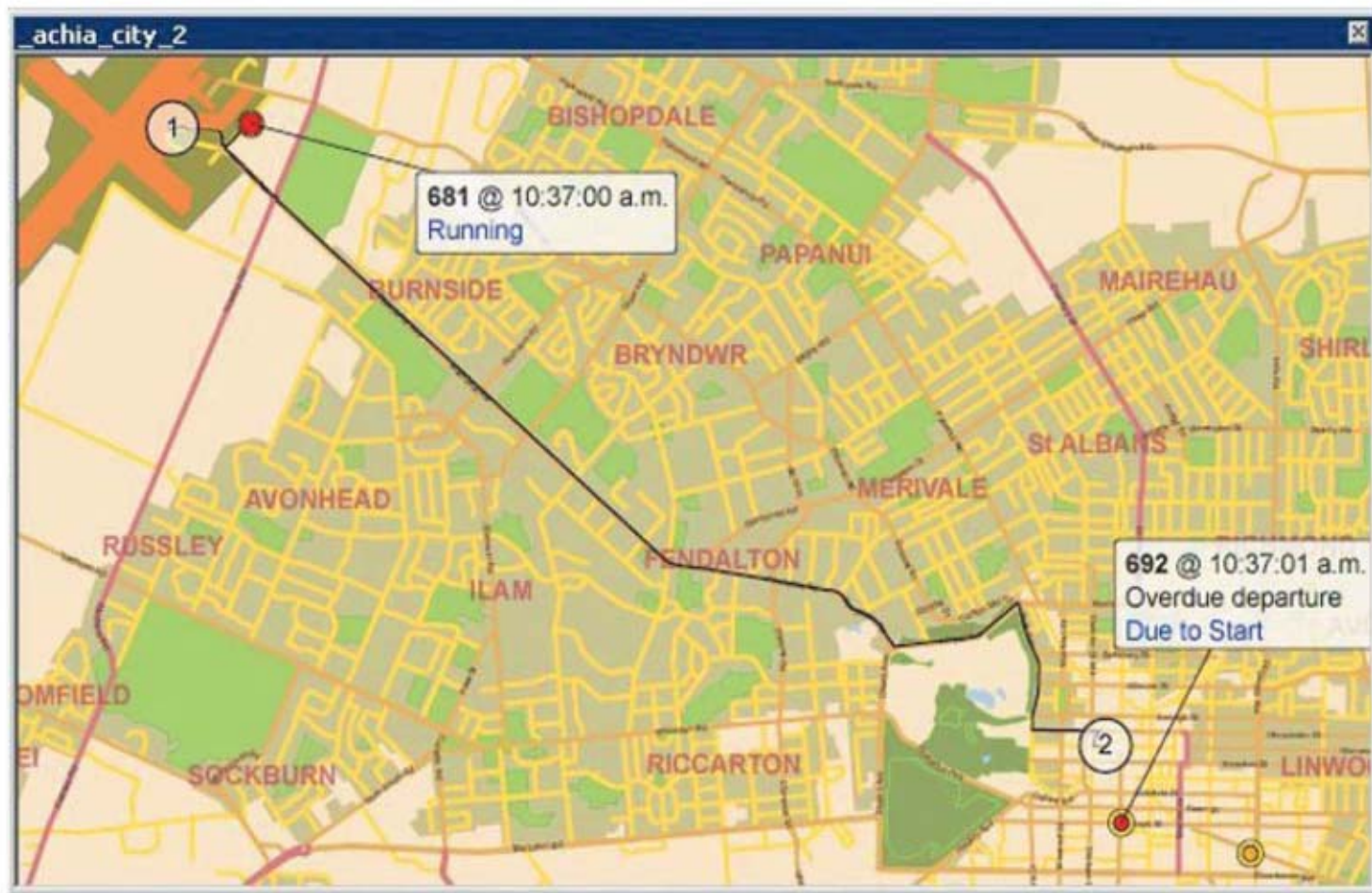
where we're
going



technology

AVL/GPS

real-time bus tracking





On-board stop announcements

[Riding Metro](#)

[Schedules & Maps](#)

[Fares & Passes](#)

[Contact Us](#)

[About Us](#)



Trip Planner

Start address...

End address...

Day

Today

Time

12 : 00

AM PM

[Plan My Trip](#)

NEWS & EVENTS

METRO Transit New Routes
Thu, November 6, 2008
New Website Launched
Mon, November 3, 2008

QUICK LINKS

[Bus system](#)
[Trolley system](#)
[Holiday Schedules](#)
[Programs & Services](#)

ACCESSIBILITY

METRO Lift is a curb-to-curb transportation service for individuals with disabilities which prevent them from using regular fixed-route bus service.

QUICK CONTACT

Union Station
300 SW 7th
Oklahoma City, OK 73109
(405) 235-RIDE

Route
Quick Links

◀ 1 2 3 4 5 6 7 8 9 10 11 12 13 14 15 16 ▶



Employee Development



Training Incentives

economic development





Modern Streetcar



Commuter Rail

The logo for Get Around OK.com features the text "Get Around OK.com" in a stylized font. "Get" and ".com" are in blue, while "Around" and "OK" are in orange. The text is set against a background of a blue and white dotted pattern with a circular graphic element.An icon of a car with a person inside, representing carpooling.

CARPPOOL

An icon of a person walking, representing walking.

WALK

An icon of a bicycle, representing biking.

BIKE

An icon of a bus, representing transit.

TRANSIT

An icon of a circular arrow, representing resources.

RESOURCES

[Home](#)

[Support](#)

[My Page](#)

[Administration](#)

[Logout](#)



Employer Info

Take advantage of new employer features on the GreenRide ACOG website.

[Learn More >](#)

CommuteTracker Stats

In total, everyone from Association Of Central Oklahoma Governments (ACOG) has saved **119 miles!**

Get Around, Get Together and Get Going!

Welcome to **GetAroundOK.com**, the new carpool matching program helping citizens of **Central Oklahoma** get to know each other better while saving gas, time and money!

Get Started!

- Create a **FREE**, easy and secure **GetAroundOK** account.
- Receive instant carpool matches based on your preferences.
- Track your commute to see the impact you're making on the environment and your pocketbook!
- Discover other resources such as transit routes, bike and pedestrian routes, and park and ride lots.
- Sign up for the Guaranteed Ride Home Program, which includes a free taxi ride home in case of emergency.
- Register for incentive programs, prizes and rewards.

Now more than ever it's time to **get together, get going and GetAroundOK!**

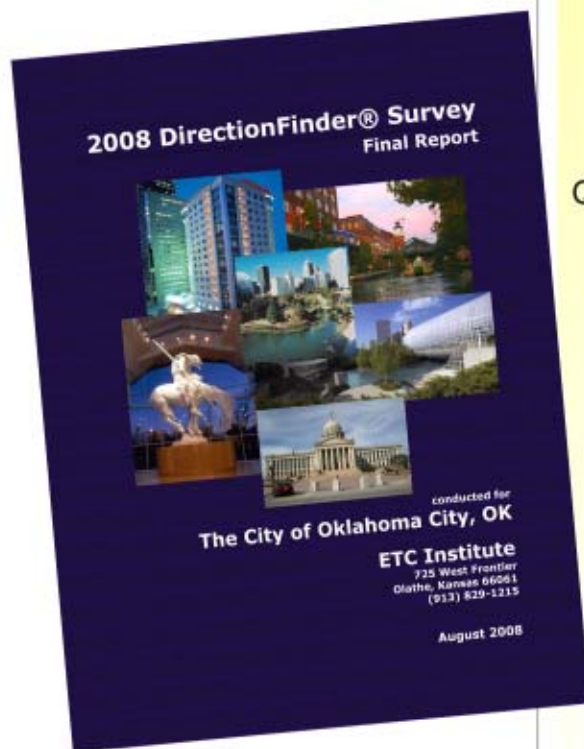


How Do We Satisfy
Diverse Customer Needs?

A top-down view of ten hands of various skin tones joined together in a circle, palms facing up. The hands are arranged in a ring, with fingers pointing towards the center. The background is white. The text 'community support' is centered over the hands. The word 'community' is in black, and 'support' is in blue. There is a light blue horizontal bar at the top and a green horizontal bar at the bottom of the image.

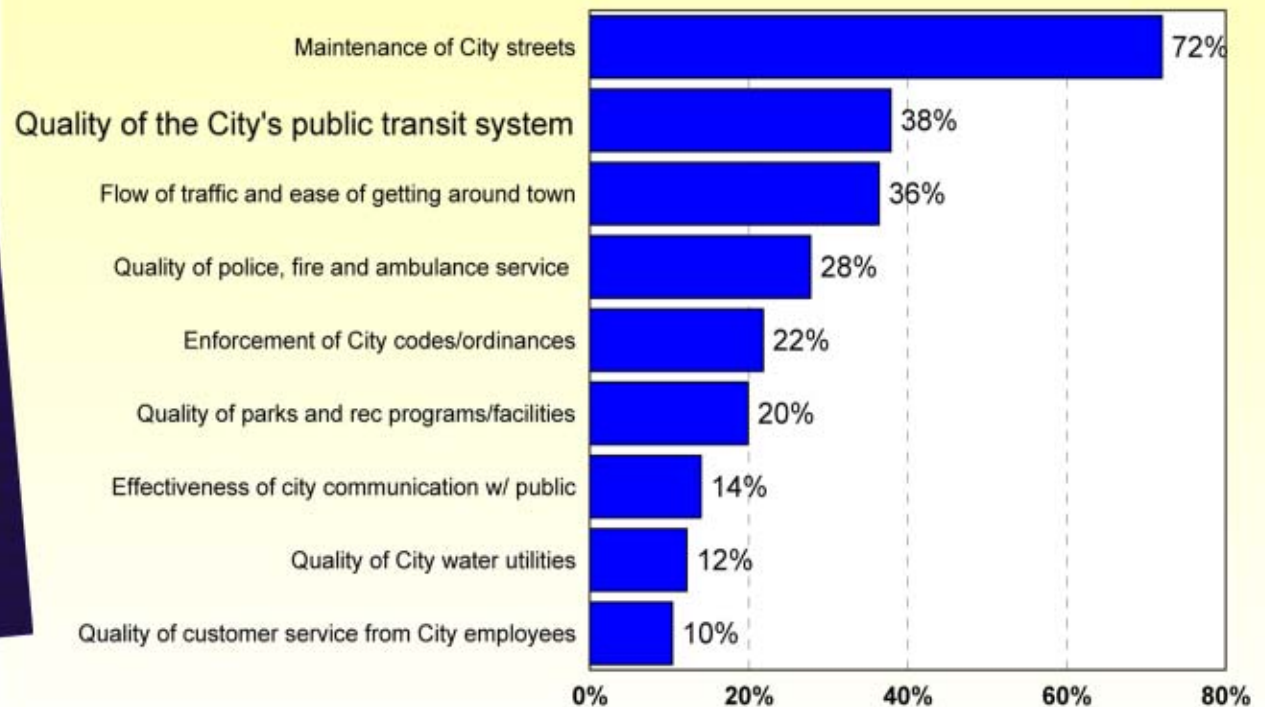
community
support

2008 Oklahoma City DirectionFinder Survey: Final Report



Q2. City Services That Should Receive the Most Emphasis Over the Next Two Years by Major Category

by percentage of respondents who selected the item as one of their top three choices



Source: ETC Institute (July 2008)

regional transit dialogue



Committees

Steering

Governance

Finance

Public Outreach

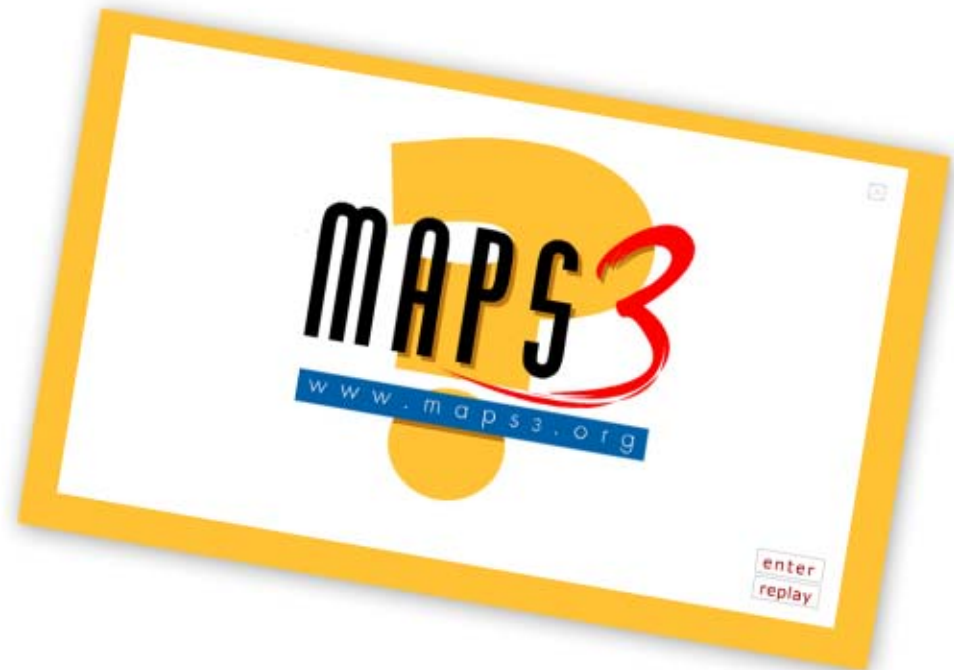
Technical/Land Use

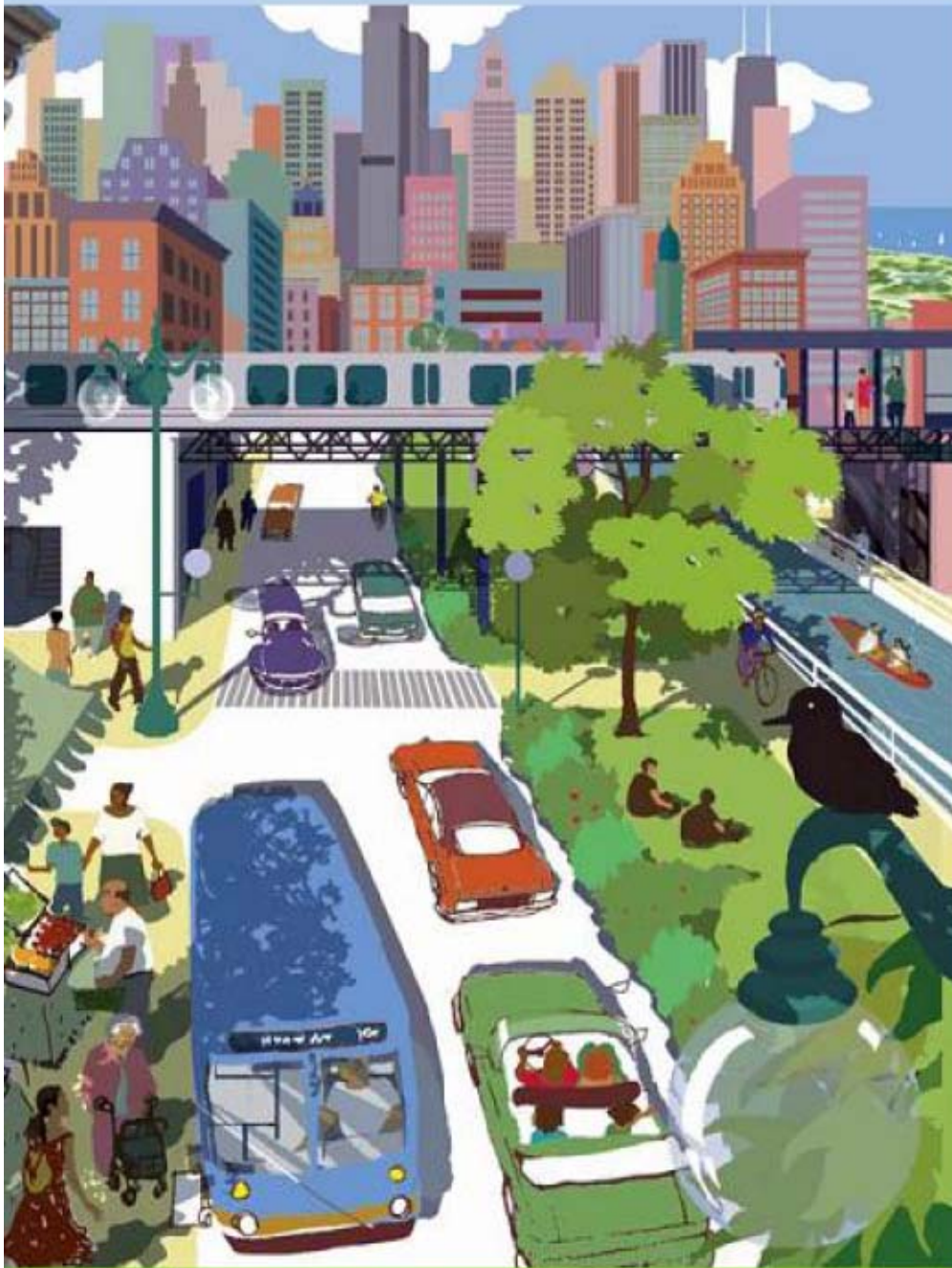
Public Transportation Ranks #1 on '07 MAPS 3 website

Citizens Support Investing In Public Transportation

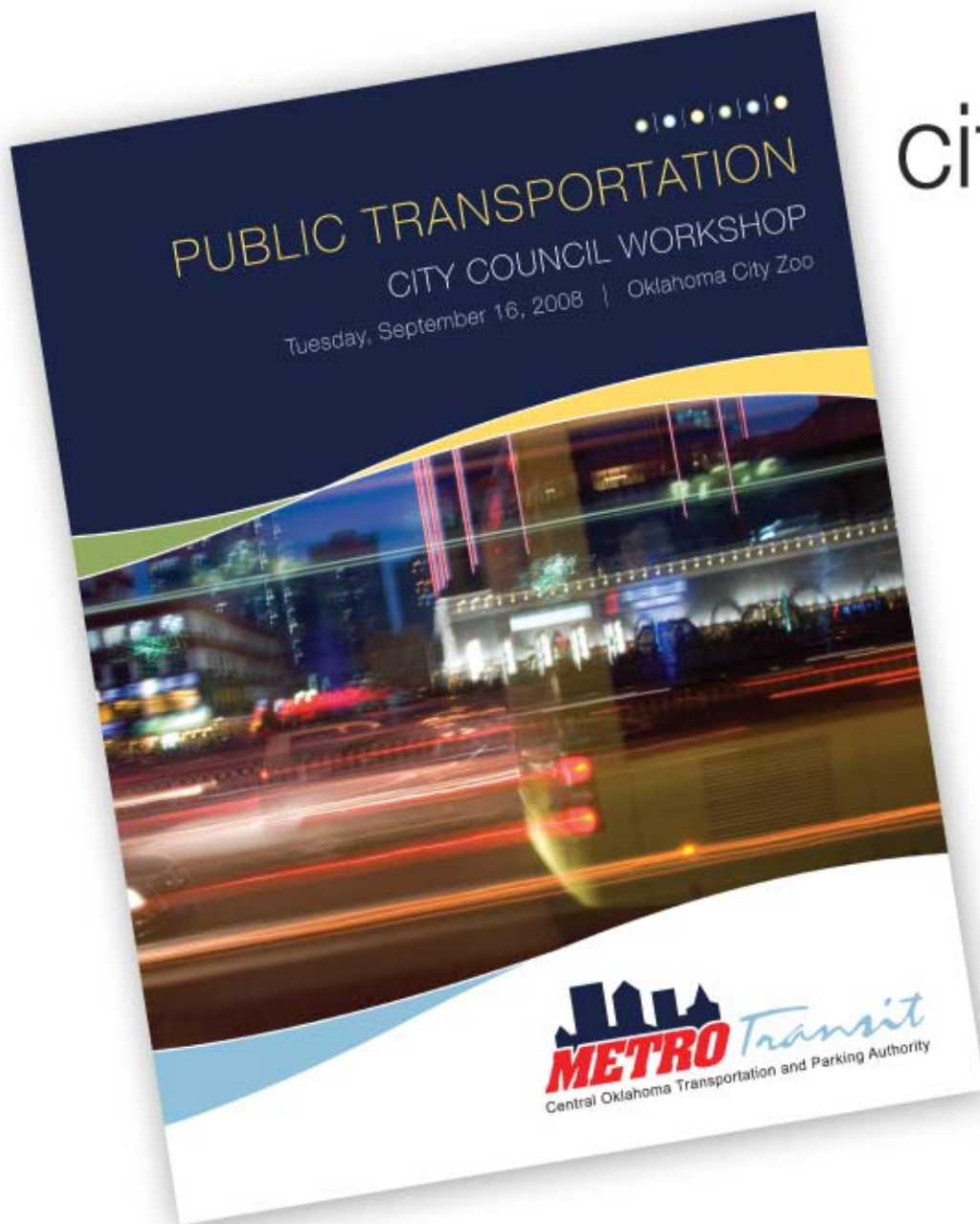
Out of 2,367 responses,
“Transit (light rail, streetcars, etc.)
received 668” votes

source: maps3.org





benefits of public **transportation**



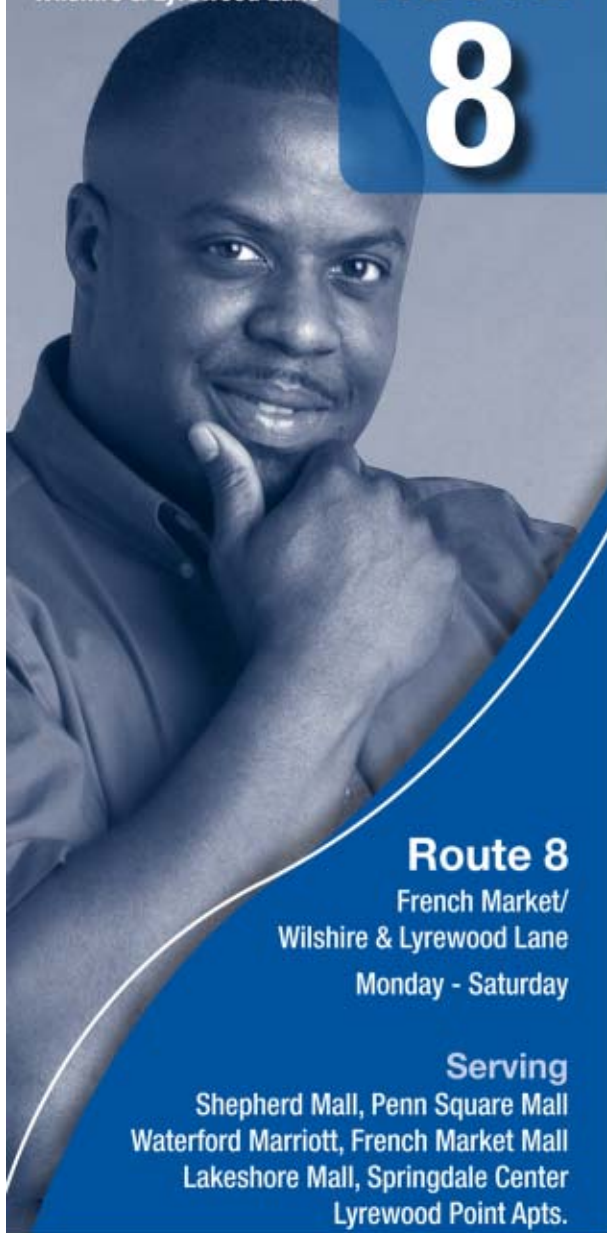
city council workshop

September 16, 2008
Oklahoma City Zoo

Staff presented a system that would increase and enhance transportation options in the Oklahoma City Metropolitan Area.

French Market/
Wilshire & Lyrewood Lane

ROUTE 8



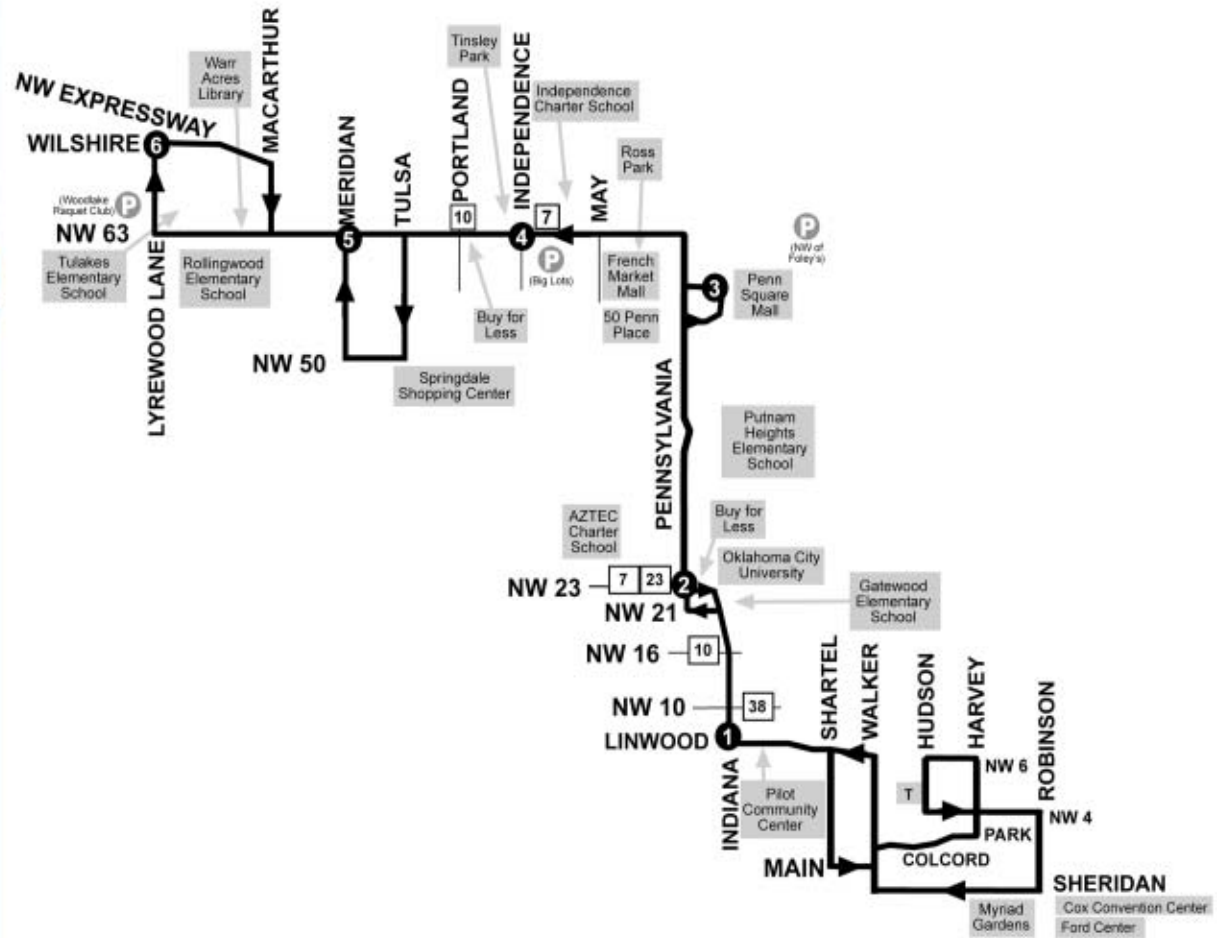
Route 8

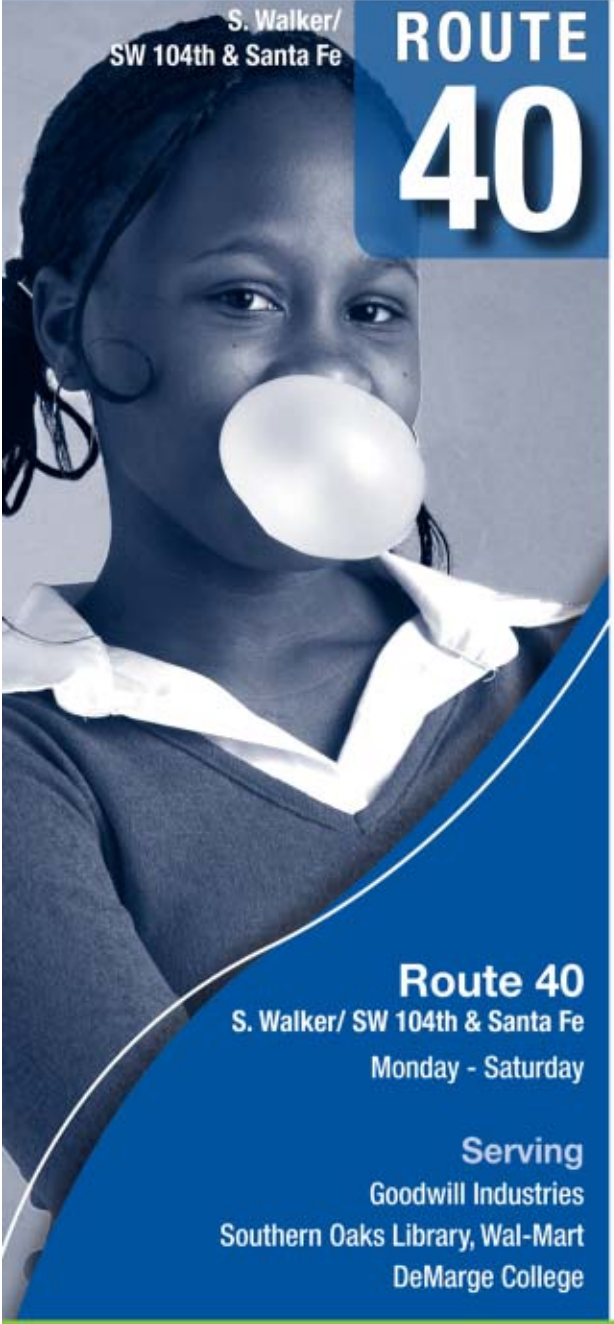
French Market/
Wilshire & Lyrewood Lane

Monday - Saturday

Serving

Shepherd Mall, Penn Square Mall
Waterford Marriott, French Market Mall
Lakeshore Mall, Springdale Center
Lyrewood Point Apts.



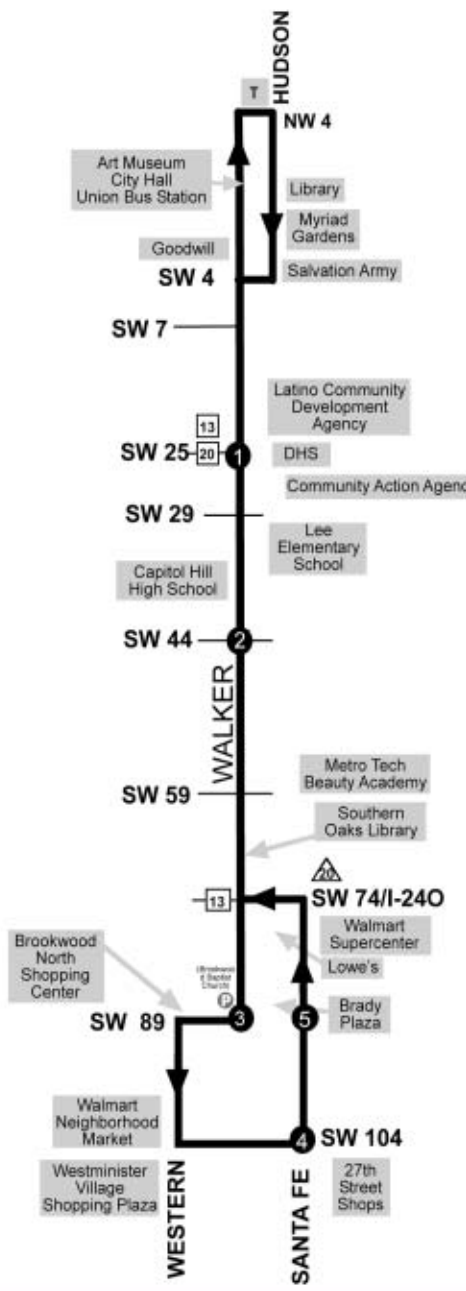


S. Walker/
SW 104th & Santa Fe

ROUTE 40

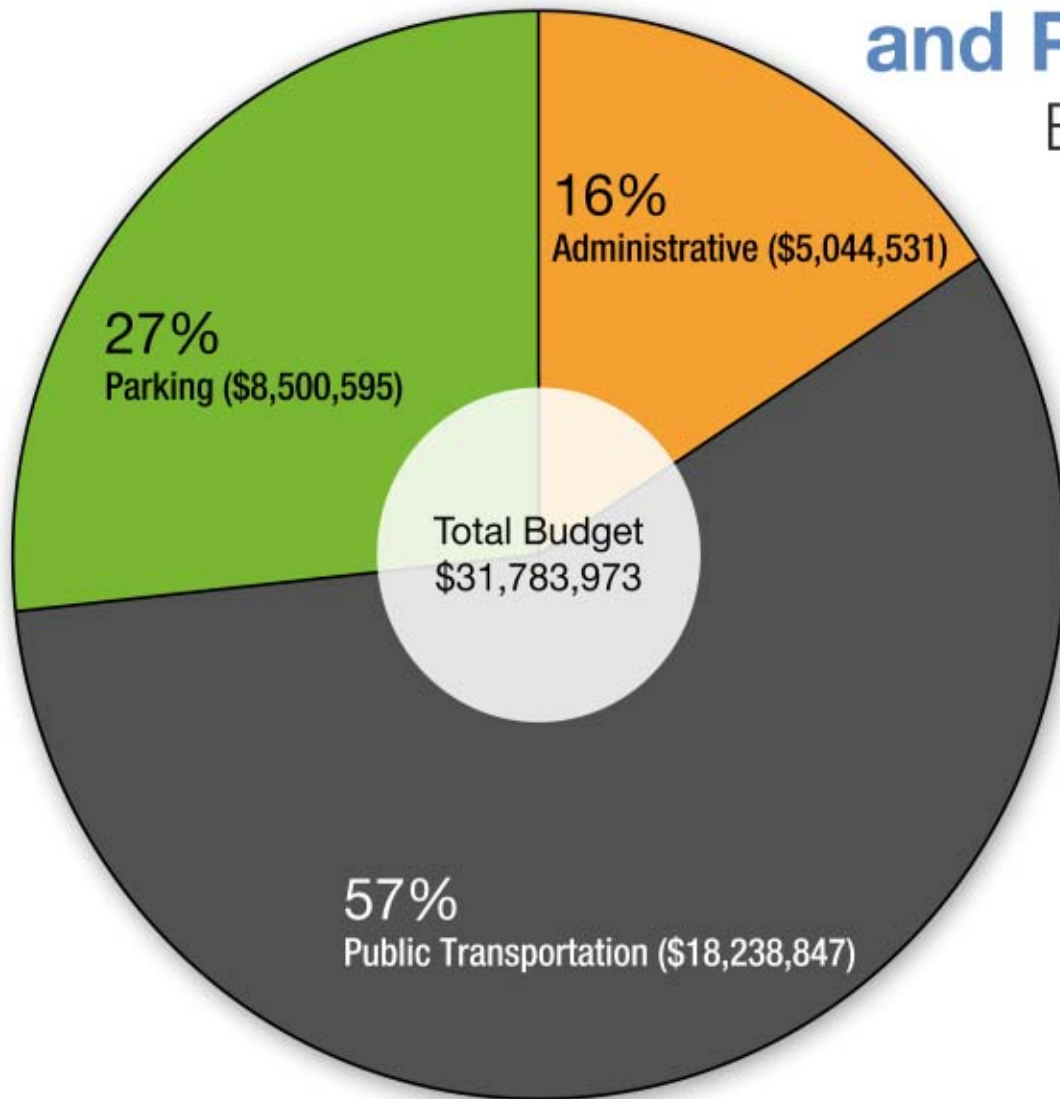
Route 40
S. Walker/ SW 104th & Santa Fe
Monday - Saturday

Serving
Goodwill Industries
Southern Oaks Library, Wal-Mart
DeMarge College



Public Transportation and Parking Department

Budget by Line of Business



Administrative	\$5,044,531
Public Transportation	\$18,238,847
Public Parking	\$8,500,595

Total Budget: \$31,783,973

Total Employees 215

PUBLIC TRANSPORTATION TAKES US THERE

